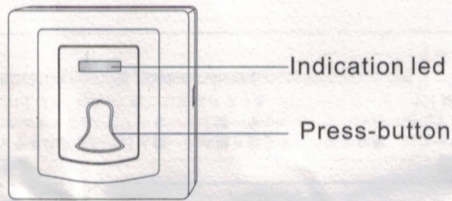


PB-206R Wireless Doorbell

1. Product appearance



2. Function introduction

PB-206R doorbell is our new R&D product, unique appearance design, super thin and easy to install. Adopt wireless transmission and no need to wiring. When it keep quiescent no current consumption, this extend the work life of the batteries. The size of location hole are compatible with standard outlet box which sells on the market. So it fit more users.

3. Technical parameter

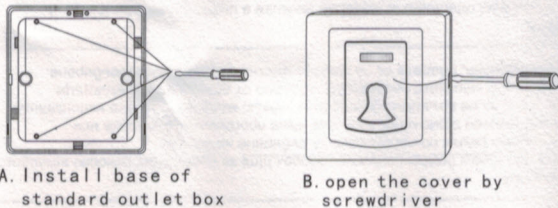
Working voltage: 3V (C R2032)
 working current: below 25mA
 Wireless transmit distance: 150m—200m
 (straight line distance in open air)
 Appearance (L*W*H) : 85mm*85mm*15mm

4. Installation

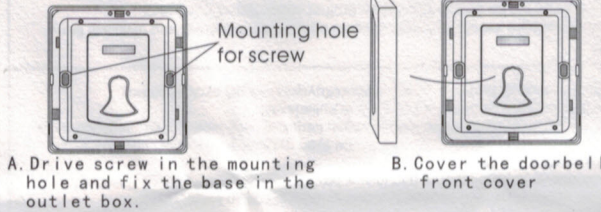
For the size of location hole are compatible with standard outlet box, there' re two mount ways you can choose.

1. Choose standard outlet box , and there' re two screws that we provide with the products.

1.1 Install standard base:

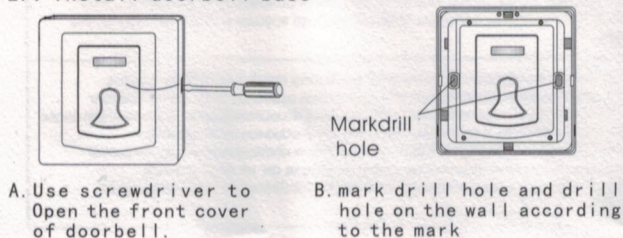


1.2 Instal doorbell:

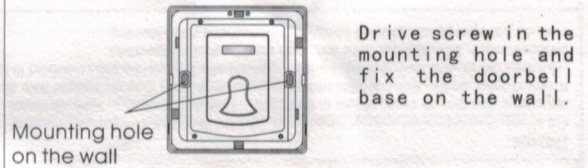


2. Use original parts to install:

2.1 Install doorbell base

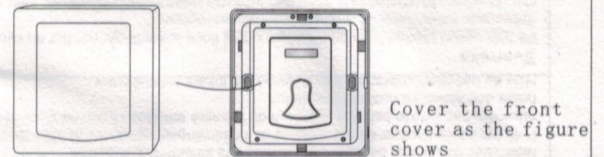


2.2 fix the doorbell:



Drive screw in the mounting hole and fix the doorbell base on the wall.

2.3 Cover the front cover

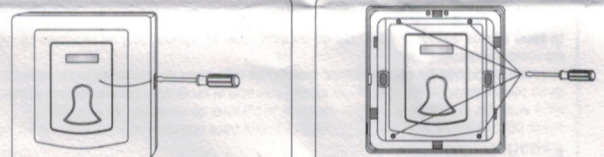


Cover the front cover as the figure shows

5. Usage method

1. Coding: Enter the control panel to detector enrolling step (specific refers to control panel instruction). Press doorbell once, then hearing response sound, then enroll successful. The doorbell enter normal work state.
2. deleting code: enter the control panel to deleting code status.

6. change batteries



1. Use screwdriver to open the two left/right bayonet then open the cover follow the direction point by the arrow head.
2. Drive out these four screws, then change batteries. Please pay attention to the positive and negative.

7. Accessories included when left factory

1. one doorbell;
2. Two couple of screws, two screw plug;
3. one hole fixing paper;
4. one instruction

8. Notes

Incorrect installation will cause abnormal working of doorbell:

1. Do not install on unstable object.
2. Do not install on large size metal wall or metal door.
3. This product is not waterproof one, just fit for indoor use. If install outdoor, please strengthen waterproof protect.